

RW system installation instructions

Requirements

One of the following Windows operating systems:

- Windows 7 Professional, Ultimate (recommended)
- Windows Vista SP2 Professional, Ultimate
- Windows XP Professional SP3
- Windows 8 Consumer Preview (experimental)

RW system requires Microsoft .NET (version **4.0**) framework and you can get it here:

<http://www.microsoft.com/en-us/download/details.aspx?id=17851>

We recommend you to use multi core processors, minimum 1GB of RAM memory, and professional audio hardware. You will get less latency, faster response and better sound performance. It is good practice to do „clean“ install of operating system, and disable all unneeded applications and services. Antivirus software can also decrease performance.

We recommend you NOT to use some „SPECIAL BLACK EDITION...“ Windows operating systems.

For a quick and easy setup process, please follow these steps:

1. Download and install MySQL Server

RW system is using MySQL database. Community edition is free and you can get it here:

<http://dev.mysql.com/get/Downloads/MySQL-5.5/mysql-5.5.25a-win32.msi/from/http://cdn.mysql.com/>

Install MySQL and proceed with MySQL configuration wizard.

Some of the settings must be configured during mysql configuration wizard process and they are displayed on the images below.

Choose Setup Type

Choose the setup type that best suits your needs



Typical

Installs the most common program features. Recommended for most users.

Custom

Allows users to choose which program features will be installed and where they will be installed. Recommended for advanced users.

Complete

All program features will be installed. Requires the most disk space.

Back

Next

Cancel

MySQL Server Instance Configuration

Configure the MySQL Server 5.5 server instance.



Please select a server type. This will influence memory, disk and CPU usage.

Developer Machine



This is a development machine, and many other applications will be run on it. MySQL Server should only use a minimal amount of memory.

Server Machine



Several server applications will be running on this machine. Choose this option for web/application servers. MySQL will have medium memory usage.

Dedicated MySQL Server Machine



This machine is dedicated to run the MySQL Database Server. No other servers, such as a web or mail server, will be run. MySQL will utilize up to all available memory.

< Back

Next >

Cancel

MySQL Server Instance Configuration

Configure the MySQL Server 5.5 server instance.



Please set the networking options.

Enable TCP/IP Networking



Enable this to allow TCP/IP connections. When disabled, only local connections through named pipes are allowed.

Port Number:

Add firewall exception for this port

Please set the server SQL mode.

Enable Strict Mode

This option forces the server to behave more like a traditional database server. It is recommended to enable this option.

< Back

Next >

Cancel

MySQL Server Instance Configuration

Configure the MySQL Server 5.5 server instance.



Please select the default character set.

Standard Character Set



Makes Latin1 the default charset. This character set is suited for English and other West European languages.

Best Support For Multilingualism



Make UTF8 the default character set. This is the recommended character set for storing text in many different languages.

Manual Selected Default Character Set / Collation



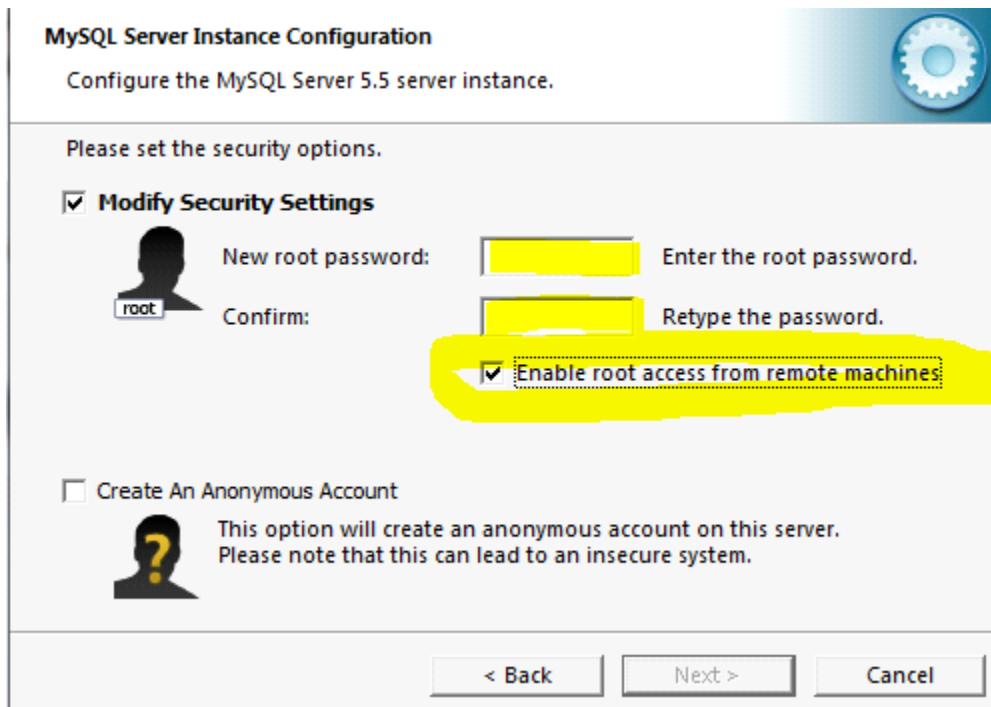
Please specify the character set to use.

Character Set:

< Back

Next >

Cancel



Enter password* for database and check „Enable root access from remote computers“.

Click next and MySQL configuration wizard will save database configuration and start MySQL service.

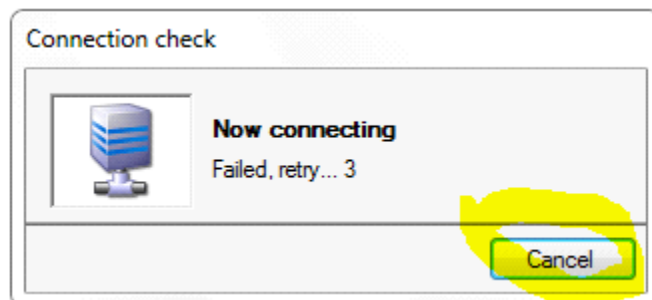
NOTE: *Remeber your database password* or write it somewhere!*

2. INSTALL VACARD – VIRTUAL AUDIO DRIVER(VacardSetup.exe)

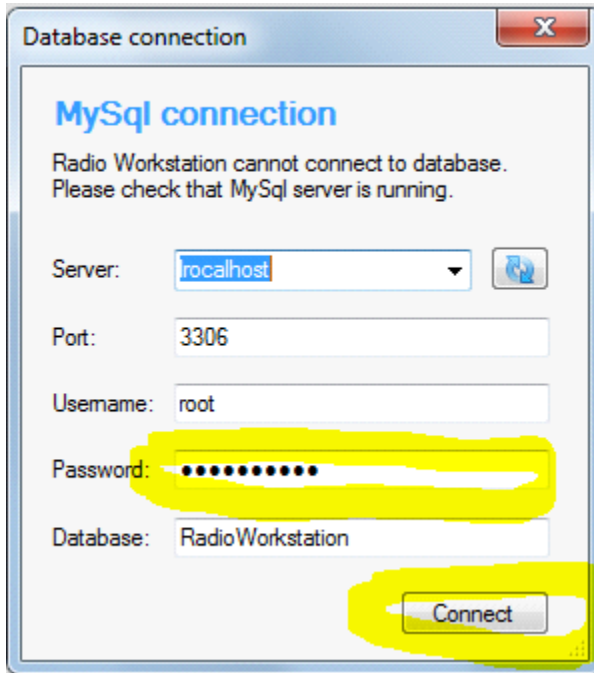
3. INSTALL RW ONAIR (OnairSetup.exe)

Run RW Onair from the start menu or a desktop icon.

On the „Connection check“ window click „Cancel“.



RW Onair will inform you about MySQL connection error. This is normal because there is no database created yet. Click „OK“.

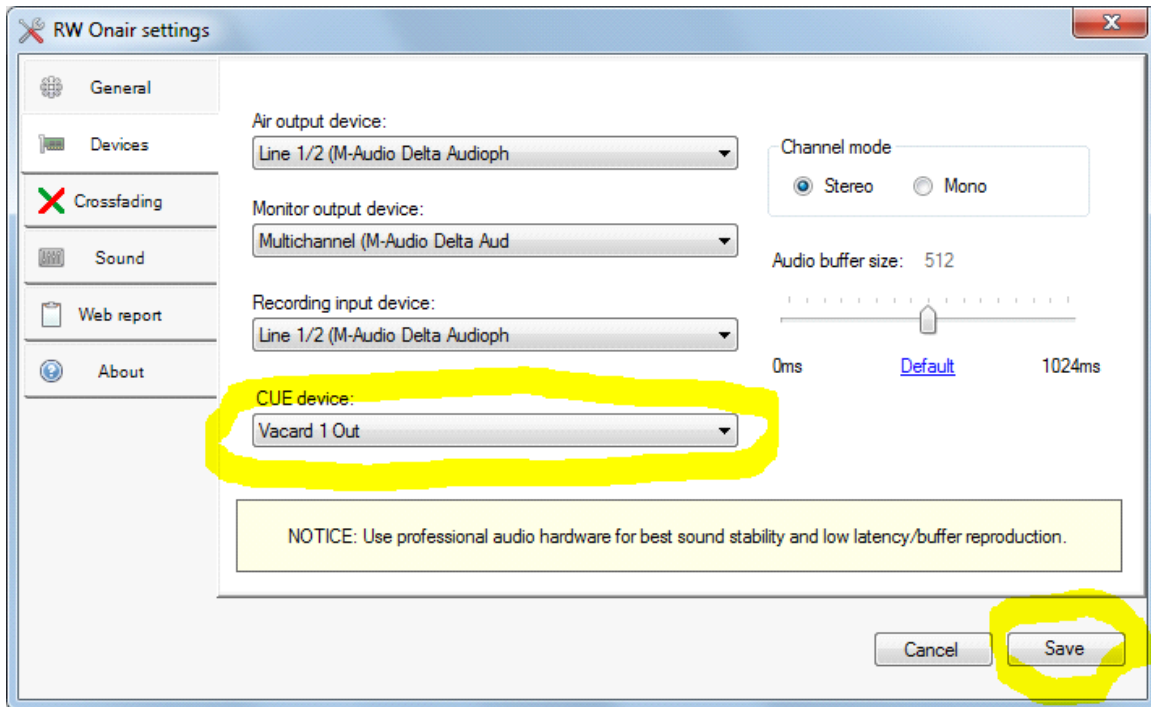


„Database connection“ window will show. Enter your database password* (no need to change anything else) , and then click „Connect“.

RW Onair will now create database and save connection settings.

NOTE: If connection fails, try entering „127.0.0.1“ in „Server“ field.

Now open "Settings" and go to „Devices“ tab. Under drop down menu „CUE device“ select „Vacard 1 Out“, and then click „Save“ button to save configuration.



4. INSTALL RW SCHEDULER (SchedulerSetup.exe)

RW is now ready to rock!

NOTE: You can install RW Scheduler application on any other computer on your local network.
Just set in the „Server“ field of database connection to computer name on wich is MySQL installed.

.....
For questions & support contact us via e-mail:
perkovic.tomislav@gmail.com

Website:
www.radioworkstation.com